



Biobased Roof Edge Profile

This biobased roof edge profile has been developed as a sustainable alternative to traditional aluminium roof edge profiles and is suitable for extensive sedum roofs. The profile provides a clean roof edge finish and prevents the substrate from washing away, while contributing to a circular and climate-friendly roof construction.

Thanks to the use of biobased HDPE made from renewable raw materials, this roof edge profile delivers not only excellent technical performance but also a demonstrable positive environmental impact, with a CO₂ emission of -1.97 kg CO₂-eq per kilogram of material.

Applications

Het dakrandprofiel is geschikt voor extensieve The roof edge profile is suitable for extensive sedum roofs, roofs without a parapet, and as a separation between vegetation, substrate and vegetation-free zones. The profile prevents substrate from washing away and provides a durable, low-maintenance edge finish for green roofs.

Packaging and Logistics

Bundle packaging: **10 units**

Bundle weight: **8.8 kg**

Pallet packaging: **220 units**

Pallet weight: **193.6 kg**

Pallet dimensions: **80 x 120 cm**

Packaging: **packaging-free**

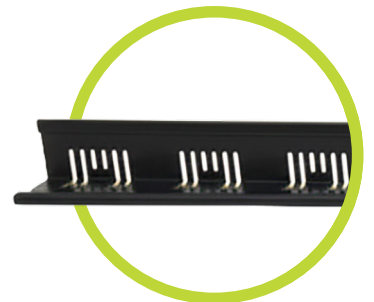
Dimensions:

Length: **200 cm**

Width: **60 / 80 mm**

Height: **60 / 80 mm**

Thickness: **2.7 mm**



Technical Specifications:

Weight: **1.2 kg per unit**

Colour: **Graphite (RAL 7024)**

Material: **Biobased HDPE**

Warranty: **10 years**

EAN: **8721398837017**



100%
Recyclable

50 years
Service Life

98%
Biobased